

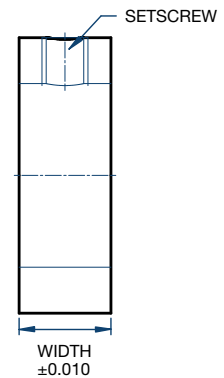
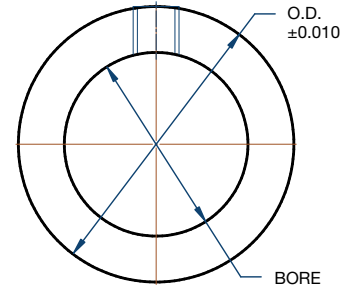
# Set Collars

**SOLID**



**BLACKSTAR®**

Part Number	Bore (in)	Bore Tolerance (in)		O.D. (in)	Width (in)	Set Screw (in)	Material*	Finish*
		Min.	Max.					
SC 1/16	0.06250	+0.0005	+0.0025	0.2500	0.1875	2-56 x 1/8	Steel	Zinc Plated
SC 3/32	0.09375	+0.0005	+0.0025	0.3750	0.1875	6-32 x 1/8	Steel	Zinc Plated
SC 1/8	0.12500	+0.0005	+0.0025	0.3750	0.2500	6-32 x 1/8	Steel	Zinc Plated
SC 5/32	0.15625	+0.0005	+0.0025	0.4375	0.2500	8-32 x 1/8	Steel	Zinc Plated
SC 3/16	0.18750	+0.0005	+0.0025	0.4375	0.2500	8-32 x 1/8	Steel	Zinc Plated
SC 1/4	0.25000	+0.0005	+0.0025	0.5000	0.3125	10-32 x 1/8	Steel	Zinc Plated
SC 5/16	0.31250	+0.0005	+0.0025	0.6250	0.31250	10-32 x 1/8	Steel	Zinc Plated
SC 3/8	0.37500	+0.0005	+0.0025	0.7500	0.3750	1/4-20 x 3/16	Steel	Zinc Plated
SC 7/16	0.43750	+0.0005	+0.0025	0.8750	0.4375	1/4-20 x 1/4	Steel	Zinc Plated
SC 1/2	0.50000	+0.0005	+0.0025	1.0000	0.4375	1/4-20 x 1/4	Steel	Zinc Plated
SC 9/16	0.56250	+0.0005	+0.0030	1.0000	0.4375	1/4-20 x 1/4	Steel	Zinc Plated
SC 5/8	0.62500	+0.0005	+0.0030	1.1250	0.5000	5/16-18 x 1/4	Steel	Zinc Plated
SC 11/16	0.68750	+0.0005	+0.0030	1.2500	0.5625	5/16-18 x 1/4	Steel	Zinc Plated
SC 3/4	0.75000	+0.0005	+0.0030	1.2500	0.5625	5/16-18 x 1/4	Steel	Zinc Plated
SC 13/16	0.81250	+0.0005	+0.0030	1.2500	0.5625	5/16-18 x 1/4	Steel	Zinc Plated
SC 7/8	0.87500	+0.0005	+0.0030	1.5000	0.5625	5/16-18 x 1/4	Steel	Zinc Plated
SC 15/16	0.93750	+0.0005	+0.0030	1.5000	0.5625	5/16-18 x 1/4	Steel	Zinc Plated
SC 1	1.00000	+0.0005	+0.0030	1.5000	0.6250	5/16-18 x 1/4	Steel	Zinc Plated
SC 1-1/16	1.06250	+0.0005	+0.0030	1.7500	0.6250	5/16-18 x 5/16	Steel	Zinc Plated
SC 1-1/8	1.12500	+0.0005	+0.0030	1.7500	0.6250	5/16-18 x 5/16	Steel	Zinc Plated
SC 1-3/16	1.18750	+0.0005	+0.0030	2.0000	0.6875	3/8-16 x 3/8	Steel	Zinc Plated
SC 1-1/4	1.25000	+0.0005	+0.0030	2.0000	0.6875	3/8-16 x 3/8	Steel	Zinc Plated
SC 1-5/16	1.31250	+0.0005	+0.0030	2.1250	0.6875	3/8-16 x 3/8	Steel	Zinc Plated
SC 1-3/8	1.37500	+0.0005	+0.0030	2.1250	0.7500	3/8-16 x 3/8	Steel	Zinc Plated
SC 1-7/16	1.43750	+0.0005	+0.0030	2.2500	0.7500	3/8-16 x 3/8	Steel	Zinc Plated
SC 1-1/2	1.50000	+0.0005	+0.0030	2.2500	0.7500	3/8-16 x 3/8	Steel	Zinc Plated
SC 1-9/16	1.56250	+0.0005	+0.0030	2.5000	0.8125	3/8-16 x 3/8	Steel	Zinc Plated
SC 1-5/8	1.62500	+0.0005	+0.0030	2.5000	0.8125	3/8-16 x 3/8	Steel	Zinc Plated
SC 1-11/16	1.68750	+0.0005	+0.0030	2.5000	0.8125	3/8-16 x 3/8	Steel	Zinc Plated
SC 1-3/4	1.75000	+0.0005	+0.0030	2.6250	0.8750	1/2-13 x 1/2	Steel	Zinc Plated
SC 1-13/16	1.81250	+0.0005	+0.0030	2.7500	0.8750	1/2-13 x 1/2	Steel	Zinc Plated
SC 1-7/8	1.87500	+0.0005	+0.0030	2.7500	0.8750	1/2-13 x 1/2	Steel	Zinc Plated
SC 1-15/16	1.93750	+0.0005	+0.0030	3.0000	0.8750	1/2-13 x 1/2	Steel	Zinc Plated
SC 2	2.00000	+0.0005	+0.0030	3.0000	0.8750	1/2-13 x 1/2	Steel	Zinc Plated
SC 2-1/16	2.06250	+0.001	+0.0040	3.0000	0.8750	1/2-13 x 1/2	Steel	Zinc Plated
SC 2-1/8	2.12500	+0.001	+0.0040	3.0000	0.8750	1/2-13 x 1/2	Steel	Zinc Plated
SC 2-3/16	2.18750	+0.001	+0.0040	3.2500	0.9375	1/2-13 x 1/2	Steel	Zinc Plated
SC 2-1/4	2.25000	+0.001	+0.0040	3.2500	0.9375	1/2-13 x 1/2	Steel	Zinc Plated
SC 2-5/16	2.31250	+0.001	+0.0040	3.2500	0.9375	1/2-13 x 1/2	Steel	Zinc Plated
SC 2-3/8	2.37500	+0.001	+0.0040	3.2500	0.9375	1/2-13 x 1/2	Steel	Zinc Plated
SC 2-7/16	2.43750	+0.001	+0.0040	3.5000	1.0000	1/2-13 x 1/2	Steel	Zinc Plated
SC 2-1/2	2.50000	+0.001	+0.0040	3.5000	1.0000	1/2-13 x 1/2	Steel	Zinc Plated
SC 2-9/16	2.56250	+0.001	+0.0040	3.7500	1.0000	1/2-13 x 1/2	Steel	Zinc Plated
SC 2-5/8	2.62500	+0.001	+0.0040	4.0000	1.1250	1/2-13 x 1/2	Steel	Zinc Plated
SC 2-11/16	2.68750	+0.001	+0.0040	4.0000	1.1250	1/2-13 x 1/2	Steel	Zinc Plated
SC 2-3/4	2.75000	+0.001	+0.0040	4.0000	1.1250	1/2-13 x 1/2	Steel	Zinc Plated
SC 2-13/16	2.81250	+0.001	+0.0040	4.0000	1.1250	1/2-13 x 1/2	Steel	Zinc Plated
SC 2-7/8	2.87500	+0.001	+0.0040	4.0000	1.1250	1/2-13 x 1/2	Steel	Zinc Plated
SC 2-15/16	2.93750	+0.001	+0.0040	4.0000	1.1250	1/2-13 x 1/2	Steel	Zinc Plated
SC 3	3.00000	+0.001	+0.0040	4.0000	1.1250	1/2-13 x 1/2	Steel	Zinc Plated
SC 3-3/16	3.18750	+0.001	+0.0040	4.2500	1.1250	1/2-13 x 1/2	Steel	Zinc Plated
SC 3-1/4	3.25000	+0.001	+0.0040	4.2500	1.1250	1/2-13 x 1/2	Steel	Zinc Plated
SC 3-7/16	3.43750	+0.001	+0.0040	4.5000	1.1250	1/2-13 x 1/2	Steel	Zinc Plated
SC 3-1/2	3.50000	+0.001	+0.0040	4.7500	1.1250	1/2-13 x 1/2	Steel	Zinc Plated
SC 3-15/16	3.93750	+0.001	+0.0040	5.0000	1.1250	1/2-13 x 1/2	Steel	Zinc Plated
SC 4	4.00000	+0.001	+0.0040	5.0000	1.1250	1/2-13 x 1/2	Steel	Zinc Plated
SC 4-3/16	4.18750	+0.001	+0.0040	5.5000	1.1250	1/2-13 x 1/2	Steel	Zinc Plated
SC 4-1/4	4.25000	+0.001	+0.0040	5.5000	1.1250	1/2-13 x 1/2	Steel	Zinc Plated
SC 4-7/16	4.43750	+0.001	+0.0040	5.5000	1.1250	1/2-13 x 1/2	Steel	Zinc Plated
SC 4-1/2	4.50000	+0.001	+0.0040	5.5000	1.2500	1/2-13 x 1/2	Steel	Zinc Plated
SC 4-11/16	4.68750	+0.001	+0.0040	6.0000	1.2500	1/2-13 x 1/2	Steel	Zinc Plated
SC 4-15/16	4.93750	+0.001	+0.0040	6.0000	1.2500	1/2-13 x 1/2	Steel	Zinc Plated
SC 5	5.00000	+0.001	+0.0040	6.0000	1.2500	1/2-13 x 1/2	Steel	Zinc Plated
SC 5-3/16	5.18750	+0.001	+0.0040	6.5000	1.2500	1/2-13 x 1/2	Steel	Zinc Plated
SC 5-7/16	5.43750	+0.001	+0.0040	6.5000	1.2500	1/2-13 x 1/2	Steel	Zinc Plated
SC 5-11/16	5.68750	+0.001	+0.0040	7.0000	1.2500	1/2-13 x 1/2	Steel	Zinc Plated
SC 5-15/16	5.93750	+0.001	+0.0040	7.0000	1.2500	1/2-13 x 1/2	Steel	Zinc Plated



\*Additional material and finishes upon request (i.e. black oxide, stainless steel, no finish).